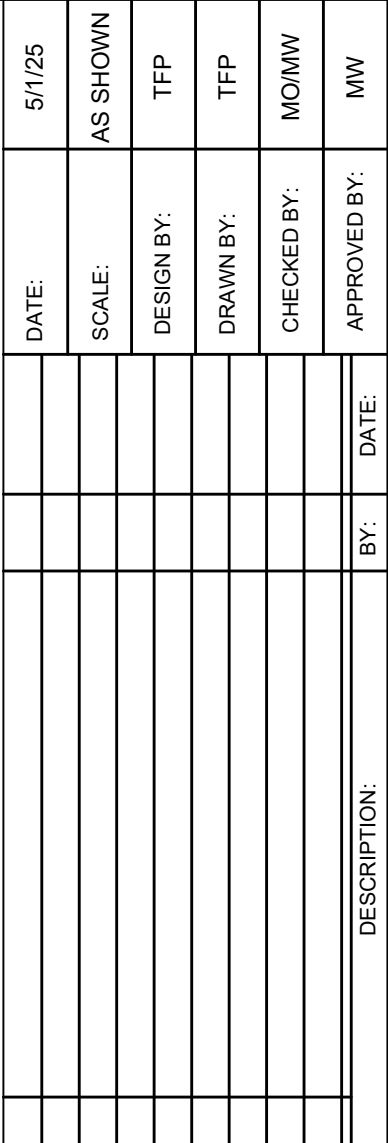


SLEEVING NOTES:

1. VEHICULAR CROSSINGS ARE SHOWN AND SIZED ON THE PLANS.
2. NON-VEHICULAR SLEEVES ARE SHOWN BUT NOT SIZED.
3. SIZE ALL NON-VEHICULAR SLEEVES ACCORDING TO THE ABOVE CHART.
4. MANHOLE CROSSINGS MUST ALSO INCLUDE A 2" CONDUIT SLEEVE FOR CONTROL WIRE.
5. CONTRACTOR TO DUCT TAPE END OF SLEEVES TO KEEP SLEEVE CLEAN AND CLEAR.
6. CONTRACTOR TO STAKE END OF EACH SLEEVE ABOVE GROUND AND PAINT FLUORESCENT ORANGE. LABEL EACH STAKE WITH "SLEEVE" AND SIZE.
7. CONTRACTOR TO PROVIDE AT LEAST MINIMUM DEPTH OF COVERAGE OVER ALL SLEEVES.

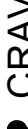
SLEEVE LABEL:
12"/6"/2" SLEEVES MEANS TO INSTALL ONE 12", ONE 6" AND ONE 2" SLEEVE.



CRAVEN • THOMPSON AND ASSOCIATES, INC.
ENGINEERS • PLANNERS • SURVEYORS

3563 N.W. 53RD STREET, FORT LAUDERDALE, FLORIDA 33309
FAX: (954) 739-6409 TEL.: (954) 739-6400

FLORIDA LICENSED ENGINEERING, ARCHITECTING & MAPING BUSINESS NO. 271
FLORIDA LICENSED LANDSCAPE ARCHITECTURE BUSINESS NO. C000114



MEMBER, AMERICAN SOCIETY OF PROFESSIONAL LANDSCAPE ARCHITECTS
MEMBER, AMERICAN SOCIETY OF PROFESSIONAL ENGINEERS
MEMBER, AMERICAN SOCIETY OF PROFESSIONAL SURVEYORS
MEMBER, AMERICAN SOCIETY OF PROFESSIONAL ARCHITECTS

ATLANTIC FLEET WASH
1501 WEST ATLANTIC BLVD.
POMPAÑO BEACH, FLORIDA

PREPARED FOR:
KAJA PROPERTIES INC.

IRRIGATION PLAN - SHRUBS AND TURF

Nicole D. Pastre
Florida R.L.A. No. 6667397
2025-05-27

PROJECT NO.
24-0055-001-01

IR-2

SHEET 2 OF 6

